

BREAKING

NEWS

WE'VE GOT EXCITING THINGS HAPPENING AT MOORE & TIBBITS... COURT OF PROTECTION TEAM EXPANDS AT LOCAL LAW FIRM

Moore & Tibbits solicitors are delighted to announce the expansion of their specialist Court of Protection team based in Westgate House, Warwick. The highly regarded existing team welcomes Senior Solicitor, **Yvonne Chapman**, Solicitor **Kirstie Lennox**, Legal Adviser **Denise Gorman** and Paralegal **Chuma Quntu** all from **Cartwright King**, Solicitors. This growth will see Moore & Tibbits with one of the largest Court of Protection teams in the West Midlands.

The Court of Protection makes decisions on financial or welfare matters for people who are unable to make decisions at the time they need to be made (they 'lack mental capacity'). This could be due to any number of reasons such as dementia, learning disabilities, an accident or a stroke to name a few.

Cases that come before the Court of Protection include issues such as where a person should live, their contact with family and friends as well as ensuring an individual is receiving the right package of care to support their needs.

The team are regularly instructed by the Official Solicitor as well as family members in relation to community care law, mental capacity, deprivation of liberty, judicial review and human rights law. The team's expertise in these areas enables them to provide specialist legal advice and representation to ensure client's voices are heard.

Debbie Anderson, Head of the Health and Community Care team said "We are absolutely delighted to welcome Yvonne, Kirstie, Denise and Chuma. I have been involved with cases over a number of years where Yvonne has also represented one of the parties. She is hugely well regarded by both the Official Solicitor, senior Judges and the legal profession as a whole and therefore,

I was absolutely delighted she and her team were able to join us. Our team is passionate about protecting the rights of individuals who are often, the most vulnerable in our society. The expansion of the team will enhance and strengthen the services we can provide"

The team can help with:

- Health and welfare applications including:
 - Section 21A applications
 - Section 16 Mental Capacity Act 2005 applications
 - Serious medical treatment cases
- On-going deputy administration
- Deputyship applications for both property and finance and health and welfare
- Ancillary applications such as Trustee Orders and Statutory Will applications
- Community care and Care Act 2014 matters, including representation of clients in judicial review proceedings

Please feel free to pass on our exciting news to colleagues who may be interested.

Please email: esme@moore-tibbits.co.uk if you would like to sign up to receive our newsletters. You can opt-out at any time.

The Team



Debbie Anderson |
Head of Health & Community Care Team
DebbieA@moore-tibbits.co.uk



Marie O'Malley |
Senior Solicitor
MarieO@moore-tibbits.co.uk



Yvonne Chapman |
Senior Solicitor
YvonneC@moore-tibbits.co.uk



Sonal Lala |
Senior Solicitor
SonalL@moore-tibbits.co.uk



Denise Gorman |
Senior Legal Adviser
DeniseG@moore-tibbits.co.uk



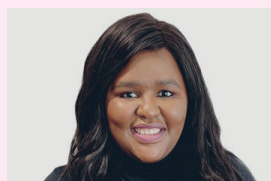
Charlotte Bell |
Solicitor
CharlotteB@moore-tibbits.co.uk



Kirstie Lennox |
Solicitor
KirstieL@moore-tibbits.co.uk



Ceri Mawson |
Trainee Solicitor
CeriM@moore-tibbits.co.uk



Chuma Quntu |
Paralegal
ChumaQ@moore-tibbits.co.uk



Isma Ayub |
Paralegal
IsmaA@moore-tibbits.co.uk

Contact Us: 01926 354704 Email: courtprotection@moore-tibbits.co.uk

Follow us

 [@MooreAndTibbits](https://twitter.com/MooreAndTibbits)  [@MooreTibbits](https://www.facebook.com/MooreTibbits)

 [@mooretibbits](https://www.instagram.com/mooretibbits)

to receive legal updates and news



To sign up to receive our
free legal updates and newsletter,
or to opt-out please email
esmeh@moore-tibbits.co.uk